

M5 POWER

The combination of the circular plug-in connector (X-TEC 15) and the power cable (W-TEC 15) provides a unique solution in the 400-volt range, for the supply of 3-phase consumers up to 7.5 kW.

X-TEC 15 CIRCULAR CONNECTOR



X-TEC 15 screw connection straight, shielded



X-TEC 15 screw connection straight, unshielded



X-TEC 15 mounting socket straight, shielded



X-TEC 15 mounting socket straight, unshielded

Technical parameters	shielded		unshielded	
Modul / Function	Power plug		Power plug	
Module	X-TEC 15 metal		X-TEC 15 plastic	
Application	Industrial environment		Industrial environment	
Locking type	Quick-release fastener		Quick-release fastener	
Nominal current in 40°C	Power contact	16.0 A	Power contact	16.0 A
	Signal contact	10.0 A	Signal contact	10.0 A
Nominal voltage	Power contact	630 V	Power contact	630 V
	Signal contact	63 V	Signal contact	63 V
Number of poles	3+PE+2		3+PE+2	
Protection class	IP 67		IP 67	
Fire protection class	UL94 / HB		UL94 / HB	
Mating cycles	≥ 500		≥ 500	
Contact type	Crimp design		Crimp design	
Contact diameter	Power contact	1.6 mm	Power contact	1.6 mm
	Signal contact		Signal contact	
Terminal connection crosssection	Power contact	0.37-2.5 mm ²	Power contact	0.37-2.5 mm ²
	Signal contact		Signal contact	
Temperature range	-20°C bis +70°C		-20°C bis +60°C	

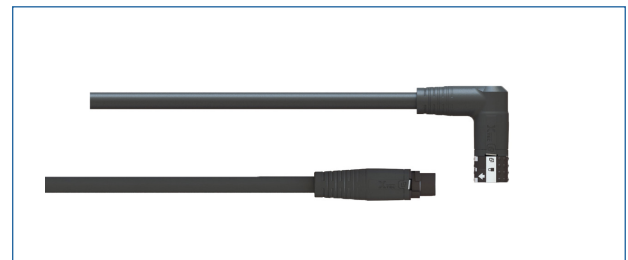
M5 POWER

The combination of the circular plug-in connector (X-TEC 15) and the power cable (W-TEC 15) provides a unique solution in the 400-volt range, for the supply of 3-phase consumers up to 7.5 kW.

W-TEC 15 POWER CABLE



W-TEC 15 Power cable from fully automated fabrication overmolded, shielded



W-TEC 15 Power cable from fully automated fabrication overmolded, unshielded



W-TEC 15 unconnected cable end with X-TEC 15 screw-in, shielded



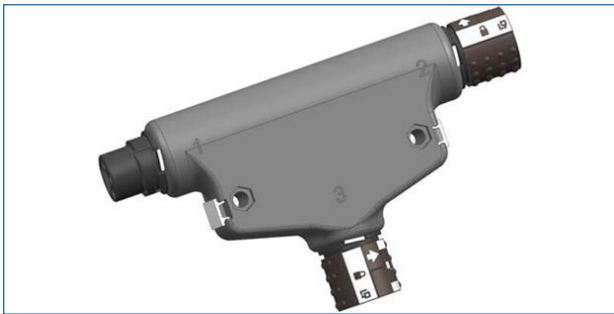
W-TEC 15 unconnected cable end with X-TEC 15 screw-in, unshielded

Technical parameters	shielded		unshielded	
Modul / Function	Supply of 3-phase consumers with up to two ancillary contacts.			
Module	X-TEC 15 metal		X-TEC 15 plastic	
Application	Industrial environment		Industrial environment	
Locking type	Quick-release fastener		Quick-release fastener	
Nominal current in 40°C	Power contact	16.0 A	Power contact	16.0 A
	Signal contact	10.0 A	Signal contact	10.0 A
Nominal voltage	Power contact	630 V	Power contact	630 V
	Signal contact	63 V	Signal contact	63 V
Number of poles	3+PE+2		3+PE+2	
Protection class	IP 67		IP 67	
Fire protection class	UL94 / HB		UL94 / HB	
Mating cycles	≥ 500		≥ 500	
Cable sheath	PUR		PUR / PVC	
Cable design	4 x 2.5 mm ² + 2 x 1.5 mm ²		6 x 2.5 mm ²	
Cable length	On request		On request	
Contact diameter	Power contact	1.6 mm	Power contact	1.6 mm
	Signal contact		Signal contact	
Temperature range	-20°C up to +70°C		-20°C up to +60°C	

M15 POWER

The combination of the circular plug-in connector (X-TEC 15) and the power cable (W-TEC 15) provides a unique solution in the 400-volt range, for the supply of 3-phase consumers up to 7.5 kW.

POWER DISTRIBUTOR PASSIVE 2xM15 T



The purpose of the distributor is to provide a means of creating a daisy-chain connection to supply 3-phase consumers up to 16 A, power buses and asynchronous motors up to 7.5kW.

Technical parameters	unshielded	
Modul / Function	Distrobutor 400 V	
Module	3 x X-TEC 15 plastic	
Application	Industrial environment	
Locking type	Quick-release fastener	
Nominal current in 40°C	Power contact	16.0 A
	Signal contact	10.0 A
Nominal voltage	Power contact	630 V
	Signal contact	63 V
Number of poles	3+PE+2	
Protection class	IP 67	
Fire protection class	UL94 / HB	
Mating cycles	≥ 100	
Internal structure	6 x 2.5 mm ²	
Contact diameter	Power contact	1.6 mm
	Signal contact	
Temperature range	-20°C bis +60°C	